

LASERCUT



Ferdinando Famia[®]
PARTICIPAZIONI DI NOZZE **ITALY**
...il fascino della qualità



Code: LaserF1011



Code: LaserF2001



Code: LaserF2002



Code: LaserF2003



Code: LaserF2004



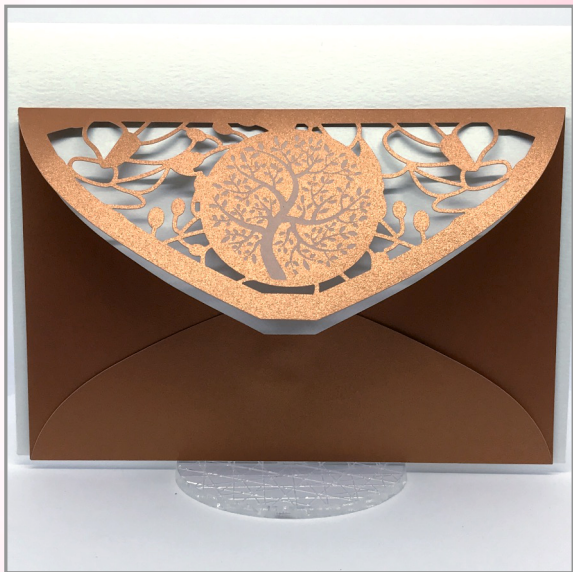
Code: LaserF2005



Code: LaserF2006



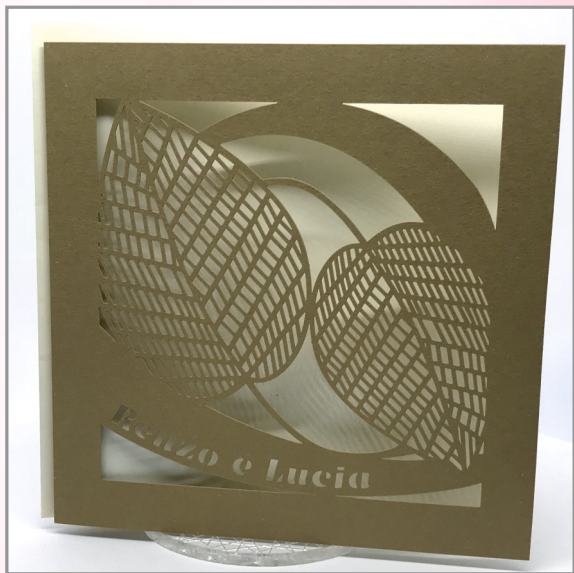
Code: LaserF2007



Code: LaserF2008



Code: LaserF2009



Code: LaserF2010



Code: LaserF2011



Code: LaserF2012



Code: LaserF2013



Code: LaserF2014



RL

Renzo

Trampolino

Lucia

Montebello

...anno, anche il loro matrimonio

...che sarà un bene per tutti

Desenzano

7 Novembre 1978 e 11, 3

1978

Le 20

via dei Serbelloni, 3

via ... 5

Code: LaserF2015



Code: LaserF2016



Code: LaserF2018



Code: LaserF2019



Code: LaserF2020



Code: LaserF2021



Code: LaserF2022



Code: LaserF2023



Code: LaserF2024



Code: LaserF2025



Code: LaserF2026



Code: LaserF2027



Code: LaserF2028



Code: LaserF2029



Annunciano il loro matrimonio

Chiesa Don Abbondio - Pescarenico
il 7 Novembre 1628 alle ore 11,30

Renzo Tramaglino

Lucia Mondetta

dopo la cerimonia

avranno il piacere di avervi ospiti
presso la Sala Ricevimenti "Don Rodrigo"
Via dei Tre Bravi, 16

Lecco

Via dei Setaioli, 13

Lecco

Via Resegone, 25

Code: LaserF2030



Renzo Tramaglino

Lucia Mondella

annunciano il loro matrimonio

Chiesa Don Abbondio

Pescarenico

il 7 Novembre 1628 alle ore 11,50

Seco - Via di Cetatali, 13

Seco - Via Pesopora, 25

Code: LaserF2031



Code: LaserF2032



*dopo la cerimonia
saluteranno parenti ed amici*

presso Sala Ricevimenti „Don Abbondio“

Via Dei Tre Bravi, 87 Pescarenico

annunciano il loro matrimonio

Chiesa Don Abbondio Pescarenico

il 7 Novembre 1628 alle ore 11,30

Renzo Tramaglino
Pescarenico - Via Dei Setaioli, 45

Lucia Mondella
Pescarenico - Via Resegone, 87

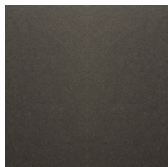
Code: LaserF2033



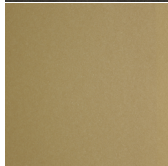
THE PRODUCTION OF THESE INVITATION IS HIGHLY CUSTOMIZED. YOU COULD CHOOSE ANY CHANGE AS PAPER, BOW, ENVELOPE, COVER, RIBBON, PRINT ETC. ETC. THESE CREATIONS MUST BE INTERPRETED FOR WHAT THEY ARE: AN HIGH ITALIAN ARTISANAL PRODUCT, AN HIGH TAILORING DRESS..



Available papers



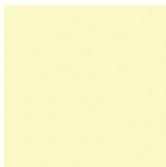
Materica Clay



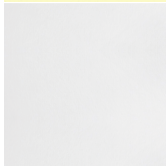
Materica Kraft



Metal Copper



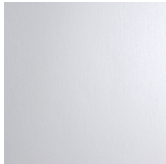
Flora Giglio



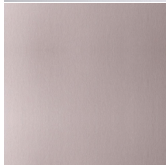
Flora Gardenia



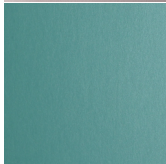
Flora Anice



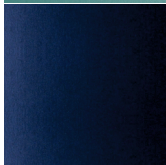
Metal Krystal



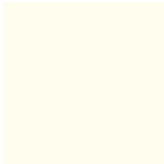
Metal Kunzite



Metal Tiffany



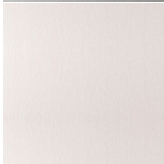
Metal Lapislazuli



Ivory



Metal Silver



Metal Quartz



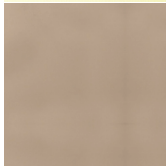
Metal Opal



Metal Coral



Sirio Peach



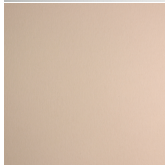
Ibizenca send



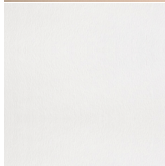
Plasti Ketchup



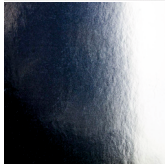
Modigliani Snow



Bisquits



Wild



Splendorlux

